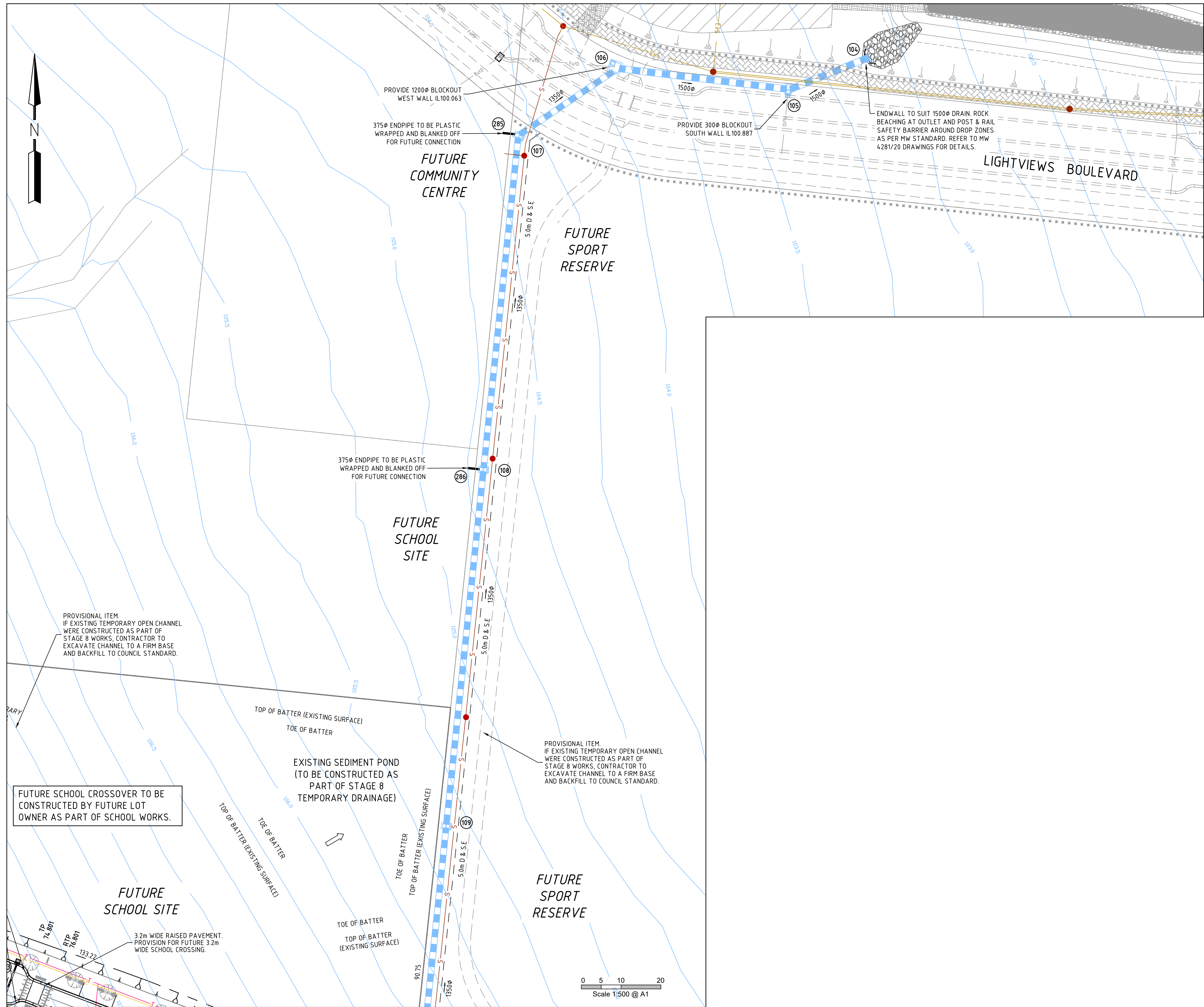


H:\22236\STAGE 9\CONSTRUCTING SET\ROAD AND DRAINAGE\22236_9R3-4_R18-21DWG



LEGEND

- B2 600 B2 TYPE KERB AS PER EDM 301
ES 150x150mm CONC. EDGE STRIP WITH SUBSOIL DRAINS UNDER.
- TEMPORARY TURNING AREA INCLUDING BOLLARDS AND "NO ROAD" SIGN.
- PROPOSED RAISED PAVEMENT.
- PROPOSED GAS & WATER CONDUITS
PROPOSED ELECT. & TELECOMM. CONDUITS
EXISTING SURFACE CONTOURS (0.25m INT.)
- DIRECTION OF LOT FINISHED SURFACE FALL / OVERLAND FLOW PATH
- 3.0m BIKE PATH 3.0m BIKE PATH. REFER TO EDM 401 FOR DETAILS.
- PROPOSED BOLLARDS AS PER LANDSCAPE PLAN
- EXISTING DRY STONE WALL (TO BE RETAINED/REMOVED IN ACCORDANCE WITH CONSERVATION MANAGEMENT PLAN.)
- DRAINAGE SCHEME PIPE(MW ASSETS) REFER TO MW4168/20 DRAWING FOR DETAILS

OVERHEAD ELECTRICAL LINE (TO BE REMOVED)
WORK PRACTICES TO BE IN ACCORDANCE WITH
"RULES FOR OPERATING NEAR OVERHEAD POWER
LINES" ISSUED BY OFFICE OF THE CHIEF
ELECTRICAL INSPECTOR

EXISTING TREES AND FENCES:

- ALL EXISTING TREES ARE TO BE REMOVED
SEEK SUPERINTENDENT CONFIRMATION
PRIOR TO REMOVAL.
- ALL EXISTING FENCES ARE TO BE REMOVED.

WARNING

BEWARE OF UNDERGROUND SERVICES
THE LOCATIONS OF UNDERGROUND SERVICES ARE APPROXIMATE
ONLY AND THEIR EXACT POSITION SHOULD BE PROVEN ON SITE
PRIOR TO COMMENCEMENT OF WORK. NO GUARANTEE IS
GIVEN THAT ALL EXISTING SERVICES ARE SHOWN.

AS CONSTRUCTED

REFER SHEET 9R3 FOR CONTINUATION

THIS DRAWING IS NOT TO BE COPIED OR SCALED

VERSION	REMARKS	DATE	BY
M	AS CONSTRUCTED	18.01.21	LP
L	PIT 139A ADDED. VIOLA & PAMPAS RAISED PAVEMENT	04.08.20	LP
K	VIOLA Dr & PAMPAS St RAISED PAVEMENT WIDEN TO 6.3m	03.07.20	LP
J	PIT 108 BUBBLE NOTATION REMOVED. CONSTRUCTION ISS	15.06.20	LP
H	SUBMISSION TO COUNCIL FOR APPROVAL	18.05.20	LP

LEGEND
DRAIN, PROPERTY INLET & PIT EX DRAIN & PIT HOUSE DRAIN SEWER AND MAINTENANCE HOLE EX SEWER AND MAINTENANCE HOLE WATER MAIN EX WATER MAIN, VALVE & HYDRANT GAS MAIN EX GAS MAIN, VALVE TELSTRA SERVICES & PITS EX TELSTRA SERVICES & PITS
RECYCLED WATER EX RECYCLED WATER ELECTRICAL U.G. SERVICES EX ELECTRICAL U.G. SERVICES ELECTRICAL SERVICE & PIT EX ELECTRICAL SERVICE & PIT ELECTRICAL OVERHEADS GAS & WATER CONDUITS TOP OF BATTER
FINISHED SURFACE LEVEL/FOOTPATH SURFACE LEVEL TOP/BOTTOM OF PROPOSED BATTER EXISTING SURFACE LEVEL EXISTING OR PROPOSED INVERT LEVEL OF PIPE OR OPEN DRAIN TANGENT POINT CHAINAGE PSM STREET SIGN DRAINAGE PIT No. TBM EX FENCE EX WALL OR BUILDING

DRAWN BY	N. KASHA	DESIGNED BY	L. PHAN
MELWAY	344, H12	CHECKED BY	L. PHAN
DATUM	AHD	AUTHORISED BY	S. RAVIDA

REEDS
CONSULTING

www.reedsconsulting.com.au
engineering@reedsconsulting.com.au

Lvl 6, 440 Elizabeth Street Melbourne Victoria 3000
p 03 8660 3000

LAND SURVEYING
CIVIL ENGINEERING
PLANNING
DEVELOPMENT CONSULTING



CITY OF MELTON
BRIDGEFIELD ESTATE, ROCKBANK
STAGE 9
LAYOUT PLAN - 2

DRAWING No.	9R4	VERSION	M
REFERENCE	22236E/9		
SHEET	4	OF	33